

LETTER OF INTRODUCTION

It is with great pleasure that we have the opportunity to introduce this first issue of the Rural Outreach Newsletter to celebrate the work completed in Winter 2022 by our students Shelby Seymour, Adele Power, and Tanzim Masood. This newsletter has been created by our students to showcase their work with the Town of Peterview, the Town of Change Islands, and for the general Office of Rural Infrastructure Outreach and Community Services (AKA Rural Outreach).

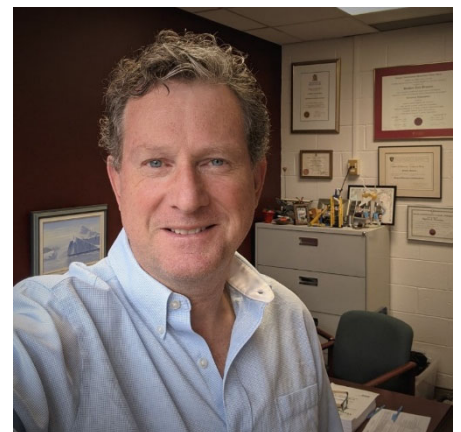
This work would not have been possible without the philanthropic support of the Fry Family Foundation as arranged through the Memorial University of Newfoundland Office of Development. The ongoing technical and administrative support, mentorship, and encouragement from many individuals within the Faculty of Engineering and Applied Science for this special program is a testament to our dedication to Memorial University's Strategic Plan *Transforming Our Horizons* <https://www.mun.ca/strategicplanning/>.

A special thank you is in order for our dear friend and colleague **Darlene Spracklin-Reid, P.Eng.**, for her leadership and efforts in the past several years to bring this program to life. Darlene was instrumental in the development of Community Service Learning Work Terms for engineering students to help non-profit organizations which served as the seed for the Rural Outreach program.

The office of Rural Outreach is administered within the group of Memorial Engineering Outreach activities which includes industrial & technology, youth, and education outreach vectors. Outreach has a Faculty appointed director, administrator, and coordinators all of whom interact closely with the Associate Dean of Undergrad's (ADU) office, the Engineering Co-op Education Office, and, Memorial's Research Innovation Office.



Brian Peach, P.Eng., CAMP
Project Engineer - Community Based
Partnerships
Memorial University of
Newfoundland and Labrador



Steve Bruneau, P.Eng., PhD
Director of Industrial Outreach
Memorial University of
Newfoundland and Labrador

RURAL OUTREACH STUDENT NEWSLETTER

29 MAY, 2023 | VOLUME 01



THE RURAL OUTREACH PROGRAM

The Rural Outreach Program has undergone a significant transformation this term, all thanks to the exceptional leadership of Mr. Brian Peach and his team of brilliant engineering students.

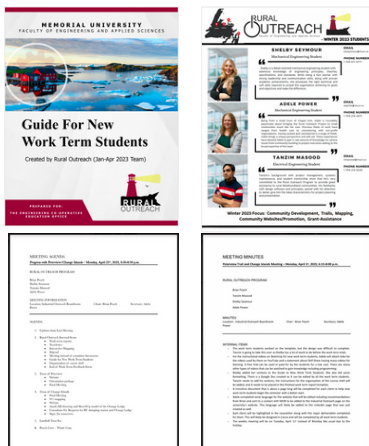
This program is dedicated to providing support to rural communities across Newfoundland and Labrador to help with various projects while aiming to improve the lives of residents in rural communities, increase tourism, and aid municipalities with necessary updates made difficult by financial and human constraints.

NEW LOGOS AND TEMPLATES

The students' creativity and attention to detail were on full display when they designed new logos for the Rural Outreach Program.



New document templates for internal and external use were also developed for the Rural Outreach Program.



THE FUTURE OF RURAL OUTREACH

The students prepared useful documents for future members. This will provide valuable insight into the program's goals, objectives, and projects.



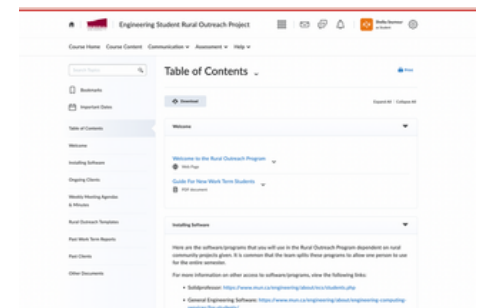
This includes how-to tutorials, step-by-step guides, and updates of projects from past and on-going clients.

WEBPAGES AND COURSE SHELL

Updates to the Rural Outreach Program webpages within the Memorial University website are underway!



The Rural Outreach D2L course shell is being renovated to welcome future members and provide them with necessary documents.



RURAL OUTREACH STUDENT NEWSLETTER

29 MAY, 2023 | VOLUME 01



THE TOWN OF PETERVIEW

Chris Torraville, the town clerk/manager of Peterview kick-started the Rural Outreach Program this term as he proposed the idea of a nature trail.

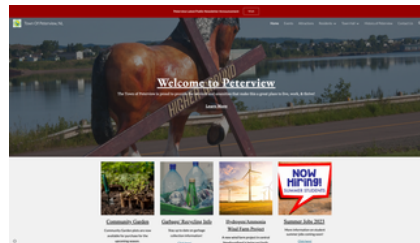
Peterview projects include trail mapping, project orientation packages, scheduling documents, new website design, and 3D sketches of proposed walking trail rest stops, benches, picnic tables, signage, and a storing shed.

GIS TRAIL MAP AND PLAN DOCUMENTS

The team worked with Chris Torraville to create detailed GIS maps of the nature trail as concept drawings.



The team also created orientation and safety packages for future workers, along with a project timeline aimed at providing a scheduling guide.



WEBSITE REIMAGINING

A new website for the Town of Peterview has been designed by Rural Outreach.

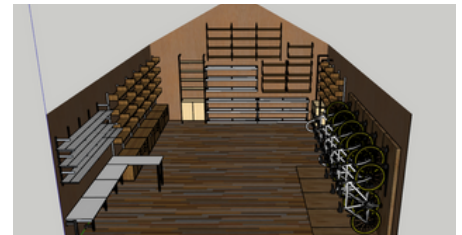
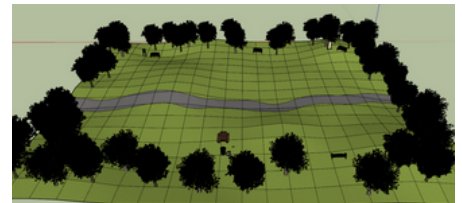
Find everything from town news/updates, events, attractions, regulations, a detailed history, and more.

This site serves as a valuable platform for Peterview's residents, tourists, and council members alike, providing relevant information and enabling citizens to stay connected with the community.

[Click here to view Peterview's website!](#)

3D DEVELOPMENT OF TRAIL REST STOPS & STORAGE SHED

The team created 3D models of rest stops throughout the trail to display benches and informational signage. A storage shed was also created to house recreational equipment.



RURAL OUTREACH STUDENT NEWSLETTER

29 MAY, 2023 | VOLUME 01



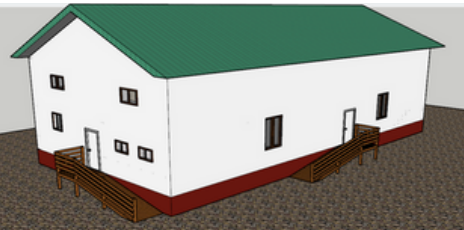
THE TOWN OF CHANGE ISLANDS

Paula and Dennis Flood, mayor and councilor of Change Islands, provided the Rural Outreach Program with numerous interesting projects to work on this term.

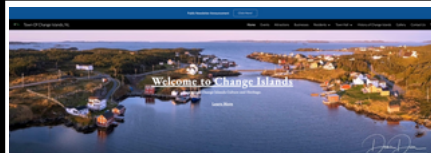
Change Islands projects include the renovation of the Orange Lodge community center, new website design, an RV dumping station, a new parking lot, consultant fee requests for projects, and a civic address map to set-up 911 services in the town.

ORANGE LODGE RENOVATIONS

The town requested that their community center, the Orange Lodge, be improved by adding some more accessible features for residents.



The team created a 3D model of the renovated building, including an accessible bathroom and ramps, to aid them in gaining additional funding.



WEBSITE REIMAGINED

A new website for the Town of Change Islands has been developed and will be published imminently!

Discover town news, stunning photography, digitized newsletters, annual events, attractions, businesses, town history, and more.

This website functions as an important platform for the community of Change Islands serving residents, tourists, and council members with pertinent information and fostering a sense of connection within the locality.

Find the new site at changeislands.ca when it is completed!

NEXT GENERATION 911 MAPPING

The team worked with the town to collect the civic address details for the properties in Change Islands to create a civic address map for the NG911 Emergency Response program across the province.



Address	City	Province	Postal Code	Country
1	Change Islands	ON	N0B 1S0	Canada
2	Change Islands	ON	N0B 1S0	Canada
3	Change Islands	ON	N0B 1S0	Canada
4	Change Islands	ON	N0B 1S0	Canada
5	Change Islands	ON	N0B 1S0	Canada
6	Change Islands	ON	N0B 1S0	Canada
7	Change Islands	ON	N0B 1S0	Canada
8	Change Islands	ON	N0B 1S0	Canada
9	Change Islands	ON	N0B 1S0	Canada
10	Change Islands	ON	N0B 1S0	Canada
11	Change Islands	ON	N0B 1S0	Canada
12	Change Islands	ON	N0B 1S0	Canada
13	Change Islands	ON	N0B 1S0	Canada
14	Change Islands	ON	N0B 1S0	Canada
15	Change Islands	ON	N0B 1S0	Canada
16	Change Islands	ON	N0B 1S0	Canada
17	Change Islands	ON	N0B 1S0	Canada
18	Change Islands	ON	N0B 1S0	Canada
19	Change Islands	ON	N0B 1S0	Canada
20	Change Islands	ON	N0B 1S0	Canada
21	Change Islands	ON	N0B 1S0	Canada
22	Change Islands	ON	N0B 1S0	Canada
23	Change Islands	ON	N0B 1S0	Canada
24	Change Islands	ON	N0B 1S0	Canada
25	Change Islands	ON	N0B 1S0	Canada
26	Change Islands	ON	N0B 1S0	Canada
27	Change Islands	ON	N0B 1S0	Canada
28	Change Islands	ON	N0B 1S0	Canada
29	Change Islands	ON	N0B 1S0	Canada
30	Change Islands	ON	N0B 1S0	Canada
31	Change Islands	ON	N0B 1S0	Canada
32	Change Islands	ON	N0B 1S0	Canada
33	Change Islands	ON	N0B 1S0	Canada
34	Change Islands	ON	N0B 1S0	Canada
35	Change Islands	ON	N0B 1S0	Canada
36	Change Islands	ON	N0B 1S0	Canada
37	Change Islands	ON	N0B 1S0	Canada
38	Change Islands	ON	N0B 1S0	Canada
39	Change Islands	ON	N0B 1S0	Canada
40	Change Islands	ON	N0B 1S0	Canada
41	Change Islands	ON	N0B 1S0	Canada
42	Change Islands	ON	N0B 1S0	Canada
43	Change Islands	ON	N0B 1S0	Canada
44	Change Islands	ON	N0B 1S0	Canada
45	Change Islands	ON	N0B 1S0	Canada

RURAL OUTREACH STUDENT NEWSLETTER

29 MAY, 2023 | VOLUME 01



BENEFITS TO MEMORIAL UNIVERSITY ENGINEERING STUDENTS

The Rural Outreach Project provides engineering students with valuable learning opportunities to gain insights into rural municipalities, enhance proficiency with diverse software programs, and cultivate innovative solutions to address the unique challenges faced by rural communities.



The Town of Peterview, a place where you can hold an Arm out over the Exploits.



The Town of Change Islands, the idyllic, back-in-time island township of your dreams.

This term, the Rural Outreach Team collaborated to execute multiple projects in Peterview and Change Islands, resulting in the acquisition of significant design and engineering experience by the team.

“

Working with the Rural Outreach Program taught me a fantastic skillset that I'll be using for the rest of my career. I practiced the ins-and-outs of GIS mapping and wrote the '[ROSU Beginner's Manual to QGIS](#)' for future students. I developed strong design experience and technical writing skills through my time spent here, and worked alongside a brilliant team. The Rural Outreach Program's structure allowed me to adapt and grow quickly, and I wholly recommend it to those considering a position of community-based development.

**Tanzim Masood, Electrical
Engineering Student**

”

“

Being from a rural community myself, I was immediately drawn to the purpose of the Rural Outreach Program, which aims to make a positive impact in the lives of rural communities. Within this program, I focused mainly on website creation for rural municipalities to allow clients to web-host their own site with low-cost applications and I wrote the '[Utilizing Website Creation for Rural Municipalities](#)' guide for future students. I acquired skills in project management, technical writing, and software development that will undeniably help in my future endeavors. I would unhesitatingly recommend this program to anyone seeking to make a meaningful difference in rural communities and work with a team of amazing individuals.

**Shelby Seymour, Mechanical
Engineering Student**

”

“

I sought out this position as a way to learn the various ways that engineers can utilize their expertise to contribute to society. In working on this project, I gained a deeper understanding of the limitations municipalities face and the supports they need to provide the best service to their community. Learning how to improve the lives of Newfoundlanders and working with non-for-profits were the most rewarding parts of this experience and I am grateful for the fulfilling experience I had working with such a dedicated team.

**Adele Power, Mechanical
Engineering Student**

”

RURAL OUTREACH STUDENT NEWSLETTER

29 MAY, 2023 | VOLUME 01



Feedback From Clients Working With Our Team

“

This has been a fantastic experience right from the start with many positive outcomes! I met with each of the students on a regular basis to review progress and answer many questions to help guide them through the project.

The work term students created a new town website, and created a plan to construct a new multi-use trail which spans the forested area (7 KM) of our town. This plan includes a GIS map of the trail, signs, rest areas, employee hand books, quotations for supplies and so much more.

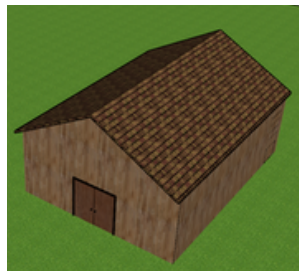
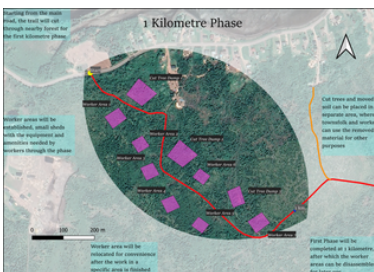
I would highly recommend this program to any municipality.

”

Chris Torrville, Town Clerk/Manager
Town of Peterview

"I needed a few students to do the leg work for the new walking trail," said Chris, the town clerk/manager of the Town of Peterview, before his first meeting with the Rural Outreach Team.

In this instance, "leg work" referred to the team's initial efforts of formulating questions for multiple meetings and refining the specifications for the trail. Subsequently, the team employed mapping and modeling software to produce polished concepts and documents, which will inform the project's future direction.



Additionally, the new official website of Peterview has received exceptional feedback from Chris, who praised its welcoming and vibrant appearance in comparison to the town's outdated previous site, which struggled to effectively conveying important information.

Paula and Dennis Flood, the mayor and a local councilor, collaborated to generate a comprehensive list of ideas for the betterment of their town. They approached our team with great enthusiasm and eagerness to commence planning for the proposed projects. They emphasized the positive impact these initiatives would have on the community upon completion.

The Orange Lodge community center was the subject of their most ambitious project, which entailed a comprehensive renovation. It aimed to improve the building's accessibility by adding ramps and an accessible bathroom. The town intended to incorporate a septic system and running water into the building in addition to an industrial kitchen. The team provided assistance in securing the Building Age-Friendly Community Grant, amounting to \$20,000, to finance the initial phase of the upgrade. To expedite the project's completion, they developed models and contract documents for the renovation plans.

The development of the new Change Islands website was a highly intricate undertaking, which involved integrating feedback from both Paula and Dennis Flood. In response to the town's desire for a contemporary website with greater content management capabilities, Rural Outreach leveraged their proficiency to tailor the content to the precise specifications outlined by the client.

Other projects the team assisted with includes the civic address map for NG911 and Crown Lands applications for an RV Station and a parking lot.

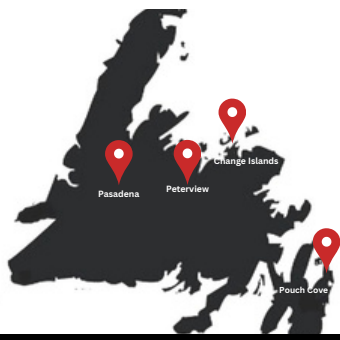
“

The Town of Change Islands was so fortunate to work with the Rural Outreach program. It was very professional and we accomplished so many projects that benefited our community. Including 911 mapping, website development, off road parking lot design and AutoCAD drawings.

Thank you for this wonderful experience, Adele, Shelby, and Tanzim.

”

Paula and Dennis Flood, Mayor and Councilor
Town of Change Islands



SHELBY SEYMOUR

Mechanical Engineering Student

“

Shelby is a detail-oriented mechanical engineering student with extensive knowledge of engineering principles, theories, specifications, and standards. While being a fast learner with strong leadership and communication skills, along with proven academic achievements, she possesses the right technical and soft skills required to propel the organization achieving its goals and objectives and make the difference.

”

EMAIL

seseymour@mun.ca

PHONE NUMBER

1-709-571-6777



ADELE POWER

Mechanical Engineering Student

“

Being from the small town of Chapel Arm, Adele is incredibly passionate about bringing the Rural Outreach Project to small communities much like her own. Previous fields of work have ranged from health care to volunteering with non-profit organizations. Having worked and volunteered in a range of fields, Adele brings a unique perspective and skill set. These experiences have allowed Adele to gain a vast amount of knowledge on various issues from community building to project execution adding to the broad expertise of the team.

”

EMAIL

aap124@mun.ca

PHONE NUMBER

1-709-219-4673



TANZIM MASOOD

Electrical Engineering Student

“

Tanzim's background with project management, systems maintenance, and student mentorship show that he's very committed to the Rural Outreach Program to provide great assistance to rural Newfoundland communities. His familiarity with design software and principles, paired with his attention to detail, give him the ideal characteristics for project planning and presentation.

”

EMAIL

tmasood@mun.ca

PHONE NUMBER

1-709-219-5028

**Winter 2023 Focus: Community Development, Trails, Mapping,
Community Websites/Promotion, Grant-Assistance**